

## Type III Environmental Product Declaration No. 915/2026

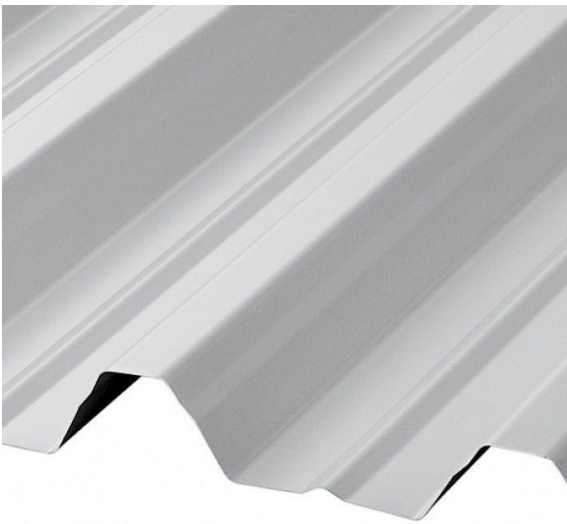


Issuance date: 13.03.2026

Validation: 15.04.2026

Validity date: 13.03.2031

### Structural trapezoidal metal sheet BTR, Structural trapezoidal metal sheet BTR with anti-condensation membranes; Cold-formed steel profil <C,Σ,Z>



#### Owner of the EPD:

Balex Metal Sp. z o. o.  
Address: Wejherowska 12C  
84-239 Bolszewo, Poland  
Contact: kontakt@balex.eu  
Website: www.balex.eu

#### EPD Program Operator:

Instytut Techniki Budowlanej (ITB)  
Address: Filtrowa 1  
00-611 Warsaw, Poland  
Website: www.itb.pl  
Contact: energia@itb.pl



ITB is the verified member of The European Platform for EPD program operators and LCA practitioner [www.eco-platform.org](http://www.eco-platform.org)

#### Basic information

This declaration is the Type III Environmental Product Declaration (EPD) based on EN 15804+A2 and verified according to ISO 14025 by an external auditor. It contains the information on the impacts of the declared construction materials on the environment. Their aspects were verified by the independent body according to ISO 14025. Basically, a comparison or evaluation of EPD data is possible only if all the compared data were created according to EN 15804+A2.

**Life cycle analysis (LCA):** A1-A3, A4-A5, C1-C4 and D modules in accordance with EN 15804+A2 (Cradle-to-Gate with options)

**The year of preparing the EPD:** 2026

**Product standards:** PN-EN 14782:2008

**Service Life:** > 50 years

**PCR:** ITB-PCR A

**Declared unit:** 1 ton

**Reasons for performing LCA:** B2B

**Representativeness:** Polish, European, 2023

## **MANUFACTURER**

Balex Metal Sp. z o.o. is a manufacturer of sandwich panels, roofing sheets, thermal insulation, cold-formed profiles, guttering and trapezoidal sheets. For more than 25 years it has been present in the market of building materials manufacturers, providing solutions for industrial, residential and agricultural construction.

Balex Metal Sp. z o.o. offers not only proven building materials, but also ensure safety and support at every stage of cooperation. Balex Metal Sp. z o.o. has 7 production facilities and 10 sales branches:

### **Poland**

- Bolszewo
- Tomaszów Mazowiecki
- Długołęka

### **Slovakia**

- Žilina

### **Czech Republic**

- Hradec Kralove
- Plzen-Slovany
- Luka na Jihlavou

### **Latvia**

- Riga
- Broceni

### **Lithuania**

- Wilno



*Figure 1 A view of Balex Metal production plant located in Bolszewo (Poland).*

## PRODUCTS DESCRIPTION AND APPLICATION

Coated sheet metal products are used as structural products in all types of buildings industrial, manufacturing, food, office, sports, retail, exhibition facilities, social, service, administrative, public utility, health service. The declaration covers the products listed in the table below.

*Table 1 List of products covered by the declaration, together with their characteristics*

Name	Steel grade	Thickness [mm]	Organic coatings (thickness)	Metallic coatings (thickness)
Structural trapezoidal metal sheet BTR	S320GD	0,70; 0,75; 0,80; 0,88; 1,00; 1,15; 1,25; 1,50	PE15 (15 µm)	-
Structural trapezoidal metal sheet BTR with anti-condensation membranes	S320GD	0,70; 0,75; 0,80; 0,88; 1,00; 1,15; 1,25; 1,50	PE15 (15 µm)	-
Cold-formed steel profil <C,Σ,Z>	S350GD	1,50; 2,0; 2,5; 3,0	-	min. Z200 (200 g/m <sup>2</sup> )

More information can be found on the Balex Metal Sp. z o.o. website : [https:// www.balex.eu/](https://www.balex.eu/)

## LIFE CYCLE ASSESSMENT (LCA) – general rules applied

### Declared Unit

The declaration refers to declared unit (DU) – 1 ton of reference product, averaged for all structural trapezoidal metal sheet and cold-formed steel profiles manufactured in Bolszewo and Tomaszów Mazowiecki (Poland).

*Note: To convert the results per 1 m<sup>2</sup>, multiply the values from the Tables 4-7 by the weight value of specific 1 m<sup>2</sup> (in kg) and divide by 1000.*

### System boundary

The life cycle analysis of the declared products covers “Product Stage” A1-A3, A4-A5, C1-C4+D modules in accordance with EN 15804+A2 and ITB PCRA v1.6. (cradle to gate with options). Energy and water consumption, emissions as well as information on generated wastes were inventoried and were included in the calculation. It can be assumed that the total sum of omitted processes does not exceed 2% of all impact categories. In accordance with EN 15804+A2, machines and facilities (capital goods) required for the production as well as transportation of employees were not included in LCA.

### Allocation

The allocation rules used for this EPD are based on general ITB PCR A, v. 1.6. Production of structural trapezoidal metal sheet and cold-formed steel profiles is a line process conducted in the

## Type III Environmental Product Declaration No. 915/2026

factory of Balex Metal Sp. z o.o., located in Bolszewo and Tomaszów Mazowiecki, located in Poland. Allocation was done on product mass basis.

All impacts from raw materials extraction and processing are allocated in module A1 of LCA. Impacts from the Balex Metal Sp. z o.o. production were inventoried on the annual production volume expressed in mass units. Water and energy consumption, associated emissions and generated wastes are allocated to module A3. Packaging materials were taken into consideration.

### **System limits**

100% materials and 100% energy consumption were inventoried in a factory and were included in calculation. In the assessment, all significant parameters from gathered production data are considered, utilized energy, and electric power consumption, direct production waste, and available emission measurements. The total of neglected input flows per module A1-A3 does not exceed the permitted maximum of 1 % of energy usage and product mass. Tires consumption for transport was not taken into account. It is assumed that the total sum of omitted processes does not exceed 2% of all impact categories. In accordance with EN 15804+A2 machines and facilities (capital goods) required for and during production are excluded, as is transportation of employees.

### **Modules A1 and A2: Raw materials supply and transport**

Raw materials such as steel sheets and others additives, wooden materials, protective foil or packaging materials come from both local and foreign suppliers. Means of transport include big trucks (> 16 t), train and ship are applied. European standards for average combustion were used for calculations.

### **Module A3: Production**

Raw materials such as steel sheets and others additives, wooden materials, protective foil or packaging materials are delivered to factory located in Bolszewo and Tomaszów Mazowiecki, where are manufacturing in a few step process including: steel decoiling, metal profiling, bending or depending on the product adding a layer of anti-condensation membranes with any coating. Then the steel sheets are packing, palleting and shipment.

### **Module A4 and A5: Transport to consumer and Installation**

Transport of solid reinforced concrete road slabs from the manufacturing plant to the construction site is carried out using specialized trucks. A transport distance of 100 km is considered (emission standard: Euro 5) with 100% load capacity. The installation energy (handling, fastening) is likely very low, approx. 5 kWh/ton of product.

### **Modules C1-C4 and D: End-of-life (EoL)**

It is assumed that at the end-of-life, 100% of structural trapezoidal metal sheet and cold-formed steel profiles are demounted using electric tools (module C1) and is transported to waste processing plant which is 100 km away, on 16-32 t lorry EURO 5 (module C2). It is assumed that 95 % of steel sheets are energy/material recovery. The residue wastes are forwarded to a landfill in the form of mixed construction and demolition wastes 5 % steel sheets. End-of-life scenario was summarized in Table 2. Environmental burdens declared in module C4 are associated with waste-specific emissions to air and groundwater. A potential credit resulting from the recycling are presented in module D.

## Type III Environmental Product Declaration No. 915/2026

Table 2. End-of-life scenario for structural trapezoidal metal sheet and cold-formed steel profiles manufactured by Balex Metal Sp. z o.o.

Material	Waste processing (energy / material recovery)	Landfilling
Steel sheets	95 %	5 %

### Data quality

The data selected for LCA analysis originates from ITB-LCI questionnaires completed by Balex Metal Sp. z o.o. using the inventory data, ITB database, Ecoinvent database v. 3.11 and KOBiZE. KOBiZE data is supplemented with Ecoinvent v. 3.11 data on the national electricity mix impact where no specific indicator data is provided. No specific data collected is older than five years and no generic datasets used are older than ten years. The representativeness, completeness, reliability, and consistency are judged as good.

### Data collection period

Primary data provided by Balex Metal Sp. z o. o. covers a period of 01.01.2023 – 31.12.2023 (1 year). The life cycle assessments were prepared for Poland and Europe as reference area.

### Assumptions and estimates

The impacts for representative of structural trapezoidal metal sheet and cold-formed steel profiles were inventoried and calculated based on consumption for all these products.

### Calculation rules

LCA was performed using ITB-LCA tool developed in accordance with EN15804+A2. Emission of greenhouse gases was calculated using the IPCC GWP method with a 100-year horizon. Emission of acidifying substances, emission of substances to water contributing to oxygen depletion, emission of gases that contribute to the creation of ground-level ozone, abiotic depletion, and ozone depletion emissions where all calculated with the EF 3.1. method. No mass balance approach was used. Biogenic content less than 5%.

### Databases

The data for the processes come from the following databases: Ecoinvent v.3.11, specific EPDs, ITB-Database. Specific data quality analysis was a part of external audit.

### Additional information

Polish electricity (Ecoinvent v 3.11 supplemented by actual national KOBiZE data) emission factor used is 0.553 kg CO<sub>2</sub>/kWh (national data released in 2024). As a general rule, no particular environmental or health protection measures other than those specified by law are necessary.

## LIFE CYCLE ASSESSMENT (LCA) – Results

### Declared unit

The declaration refers to declared unit (DU) – 1 ton of structural trapezoidal metal sheet and cold-formed steel profiles. The following life cycle modules (Table 3) were included in the analysis. The evaluation results for the specific products are given in Tables 4-7.

*Table 3. System boundaries for the environmental characteristics of structural trapezoidal metal sheet and cold-formed steel profiles production process by Balex Metal Sp. z o.o.*

Environmental assessment information (MD – Module Declared, MND – Module Not Declared, INA – Indicator Not Assessed)																
Product stage			Construction process		Use stage							End of life				Benefits and loads beyond the system boundary
Raw material supply	Transport	Manufacturing	Transport to construction site	Construction-installation process	Use	Maintenance	Repair	Replacement	Refurbishment	Operational energy use	Operational water use	Deconstruction demolition	Transport	Waste processing	Disposal	Reuse-recovery-recycling potential
A1	A2	A3	A4	A5	B1	B2	B3	B4	B5	B6	B7	C1	C2	C3	C4	D
MD	MD	MD	MND	MND	MND	MND	MND	MND	MND	MND	MND	MD	MD	MD	MD	MD

## Type III Environmental Product Declaration No. 915/2026

Table 4. Life cycle assessment (LCA) results for specific product manufactured by Balex Metal Sp. z o.o. - environmental impacts (DU: 1 ton)

Indicator	Unit	A1	A2	A3	A1-A3	A4	A5	C1	C2	C3	C4	D
Global Warming Potential	eq. kg CO <sub>2</sub>	1.52E+03	5.20E+01	5.51E+01	1.62E+03	1.67E+01	3.43E+00	3.43E+00	8.34E+00	1.27E+02	2.64E-01	-1.49E+03
Greenhouse gas potential - fossil	eq. kg CO <sub>2</sub>	1.52E+03	5.20E+01	5.51E+01	1.63E+03	1.66E+01	3.43E+00	3.43E+00	8.31E+00	6.19E+01	2.63E-01	-1.55E+03
Greenhouse gas potential - biogenic	eq. kg CO <sub>2</sub>	-3.23E+00	5.16E-02	7.92E-02	-3.10E+00	5.68E-02	1.00E-04	1.00E-04	2.84E-02	6.53E+01	6.71E-04	-6.10E+01
Global warming potential - land use and land use change	eq. kg CO <sub>2</sub>	8.23E-01	1.96E-02	5.63E-03	8.49E-01	6.52E-03	1.20E-06	1.20E-06	3.26E-03	9.77E-03	2.49E-04	-9.39E-01
Stratospheric ozone depletion potential	eq. kg CFC <sub>11</sub>	2.94E-05	1.12E-06	2.26E-06	3.28E-05	3.85E-06	7.00E-11	7.00E-11	1.92E-06	7.56E+02	1.07E-07	-2.96E-05
Soil and water acidification potential	eq. mol H <sup>+</sup>	5.50E+00	1.70E-01	6.00E-01	6.27E+00	6.75E-02	3.80E-05	3.80E-05	3.37E-02	5.16E-01	2.48E-03	-5.82E+00
Eutrophication potential - freshwater	eq. kg P	7.42E-01	4.22E-03	9.04E-02	8.37E-01	1.12E-03	6.50E-06	6.50E-06	5.59E-04	4.19E-04	2.45E-05	-7.36E-01
Eutrophication potential - seawater	eq. kg N	1.30E+00	5.66E-02	7.88E-02	1.43E+00	2.04E-02	5.50E-06	5.50E-06	1.02E-02	1.75E+00	8.62E-04	-1.35E+00
Eutrophication potential - terrestrial	eq. mol N	1.36E+01	6.15E-01	6.75E-01	1.49E+01	2.22E-01	4.65E-05	4.65E-05	1.11E-01	3.32E+00	9.43E-03	-1.41E+01
Potential for photochemical ozone synthesis	eq. kg NMVOC	6.66E+00	2.53E-01	2.00E-01	7.11E+00	6.80E-02	1.30E-05	1.30E-05	3.40E-02	7.23E-01	2.74E-03	-6.80E+00
Potential for depletion of abiotic resources - non-fossil resources	eq. kg Sb	1.88E-03	1.80E-04	2.64E-05	2.09E-03	5.89E-05	1.67E-08	1.67E-08	2.95E-05	1.40E-05	6.04E-07	-4.03E-03
Abiotic depletion potential - fossil fuels	MJ	1.71E+04	7.40E+02	1.05E+03	1.89E+04	2.47E+02	5.80E-02	5.80E-02	1.23E+02	5.87E+01	7.22E+00	-1.74E+04
Water deprivation potential	eq. m <sup>3</sup>	5.17E+02	4.29E+00	2.00E+01	5.42E+02	1.14E+00	1.20E-03	1.20E-03	5.70E-01	1.38E+00	2.29E-02	-5.28E+02

## Type III Environmental Product Declaration No. 915/2026

Table 5. Life cycle assessment (LCA) results for specific product manufactured by Balex Metal Sp. z o.o. - additional impacts indicators (DU: 1 ton)

Indicator	Unit	A1	A2	A3	A1-A5	C1	C2	C3	C4	D
Particulate matter	disease incidence	INA	INA	INA	INA	INA	INA	INA	INA	INA
Potential human exposure efficiency relative to U235	eg. kBq U235	INA	INA	INA	INA	INA	INA	INA	INA	INA
Potential comparative toxic unit for ecosystems	CTUe	INA	INA	INA	INA	INA	INA	INA	INA	INA
Potential comparative toxic unit for humans (cancer effects)	CTUh	INA	INA	INA	INA	INA	INA	INA	INA	INA
Potential comparative toxic unit for humans (non-cancer effects)	CTUh	INA	INA	INA	INA	INA	INA	INA	INA	INA
Potential soil quality index	dimensionless	INA	INA	INA	INA	INA	INA	INA	INA	INA

Table 6. Life cycle assessment (LCA) results for specific product manufactured by Balex Metal Sp. z o.o. - environmental aspects related to resource use (DU: 1 ton)

Indicator	Unit	A1	A2	A3	A1-A3	A4	A5	C1	C2	C3	C4	D
Consumption of renewable primary energy - excluding renewable primary energy sources used as raw materials	MJ	1.18E+03	1.53E+01	7.20E+01	1.27E+03	3.54E+00	4.30E-03	4.30E-03	1.77E+00	1.08E+00	6.27E-02	-2.40E+03
Consumption of renewable primary energy resources used as raw materials	MJ	6.30E+01	0.00E+00	0.00E+00	6.30E+01	0.00E+00	0.00E+00	0.00E+00	0.00E+00	0.00E+00	0.00E+00	0.00E+00
Total consumption of renewable primary energy resources	MJ	1.24E+03	1.53E+01	7.20E+01	1.33E+03	3.54E+00	4.30E-03	4.30E-03	1.77E+00	1.08E+00	6.27E-02	-2.40E+03
Consumption of non-renewable primary energy - excluding renewable primary energy sources used as raw materials	MJ	1.67E+04	7.41E+02	1.07E+03	1.85E+04	2.47E+02	5.82E-02	5.82E-02	1.23E+02	2.85E+03	7.22E+00	-1.74E+04
Consumption of non-renewable primary energy resources used as raw materials	MJ	4.82E+02	0.00E+00	0.00E+00	4.82E+02	0.00E+00	0.00E+00	0.00E+00	0.00E+00	2.91E+03	0.00E+00	0.00E+00
Total consumption of non-renewable primary energy resources	MJ	1.71E+04	7.41E+02	1.07E+03	1.90E+04	2.47E+02	5.82E-02	5.82E-02	1.23E+02	5.88E+01	7.22E+00	-1.74E+04
Consumption of secondary materials	kg	8.97E+02	3.54E-01	7.25E-02	8.98E+02	8.27E-02	5.30E-06	5.30E-06	4.14E-02	2.65E-02	1.52E-03	-8.94E+02
Consumption of renewable secondary fuels	MJ	2.59E+00	4.30E-03	3.16E-04	2.60E+00	9.11E-04	2.95E-08	2.95E-08	4.56E-04	3.60E-04	3.96E-05	-2.23E+01
Consumption of non-renewable secondary fuels	MJ	3.64E-04	0.00E+00	0.00E+00	3.64E-04	0.00E+00	4.70E-05	4.70E-05	0.00E+00	0.00E+00	0.00E+00	-7.08E-04
Net consumption of freshwater resources	m <sup>3</sup>	1.18E+03	1.53E+01	7.20E+01	1.27E+03	3.10E-02	1.58E-05	1.58E-05	1.55E-02	5.20E-02	7.90E-03	-1.30E+01

## Type III Environmental Product Declaration No. 915/2026

Table 7. Life cycle assessment (LCA) results for specific product manufactured by Balex Metal Sp. z o.o. - environmental information describing waste categories (DU: 1 ton)

Indicator	Unit	A1	A2	A3	A1-A3	A4	A5	C1	C2	C3	C4	D
Hazardous waste. neutralized	kg	1.26E+01	9.85E-02	4.86E-01	1.32E+01	2.77E-01	6.00E-07	6.00E-07	1.38E-01	4.21E-06	7.67E-03	-2.14E+02
Non-hazardous waste neutralised	kg	2.04E+02	1.15E+00	8.76E+00	2.14E+02	4.92E+00	3.12E-05	3.12E-05	2.46E+00	1.10E+01	1.08E-01	-2.88E+03
Radioactive waste	kg	3.01E+03	2.61E+01	4.40E+02	3.48E+03	1.84E-05	4.35E-08	4.35E-08	9.21E-06	3.13E-04	4.79E-05	-3.44E-02
Components for re-use	kg	3.35E-02	3.15E-04	6.12E-04	3.44E-02	0.00E+00	0.00E+00	0.00E+00	0.00E+00	0.00E+00	0.00E+00	0.00E+00
Materials for recycling	kg	0.00E+00	0.00E+00	0.00E+00	0.00E+00	7.64E-04	6.00E-08	6.00E-08	3.82E-04	3.92E-04	1.44E-05	0.00E+00
Materials for energy recovery	kg	3.35E-01	1.02E-02	1.71E+02	1.72E+02	6.18E-06	5.25E-10	5.25E-10	3.09E-06	4.89E-06	1.71E-07	0.00E+00
Energy exported	MJ	7.84E-04	4.74E-05	8.43E-06	8.40E-04	0.00E+00	1.73E-04	1.73E-04	0.00E+00	5.98E+01	0.00E+00	0.00E+00

## Type III Environmental Product Declaration No. 915/2026

### Verification

The process of verification of this EPD is in accordance with ISO 14025. After verification, this EPD is valid for a 5-year-period. EPD does not have to be recalculated after 5 years, if the underlying data have not changed significantly.

The basis for LCA analysis was EN 15804+A2 and ITB PCR A
Independent verification corresponding to ISO 14025 (subclause 8.1.3.)
<input checked="" type="checkbox"/> external <input type="checkbox"/> internal
External verification of EPD: Halina Prejzner, PhD Eng
LCI data, audit and verification: Michał Chwedaczuk, M.Sc. Eng.
LCA, LCI audit and input data verification: Michał Piasecki, PhD. DSc. Eng

Note 1: The declaration owner has the sole ownership, liability and responsibility for the information provided and contained in EPD. Declarations within the same product category but from different programmes may not be comparable. Declarations of construction products may not be comparable if they do not comply with EN 15804 + A2. For further information about comparability, see EN 15804 + A2 and ISO 14025. Depending on the application, a corresponding conversion factor such as the specific weight per surface area must be taken into consideration.

Note 2: ITB is a public Research Organization and Notified Body (EC Reg. no 1488) to the European Commission and to other Member States of the European Union designated for the tasks concerning the assessment of building products performance. ITB acts as the independent, third-party verification organization (17065/17025 certified). ITB-EPD program is recognized and registered member of The European Platform – Association of EPD program operators and ITB-EPD declarations are registered and stored in the international ECO-PORTAL.

### Normative references

- ITB PCR A, v. 1.6 General Product Category Rules for Construction Products
- EN 14509:2013 Self-supporting double skin metal faced insulating panels - Factory made products – Specification
- 14782:2006 self-supporting metal sheet for roofing, external cladding and internal lining - product specification and requirements
- ISO 14025 Environmental labels and declarations – Type III environmental declarations – Principles and procedures
- ISO 21930:2017 Sustainability in buildings and civil engineering works – Core rules for environmental product declarations of construction products and services
- ISO 14044:2006 Environmental management – Life cycle assessment – Requirements and guidelines
- ISO 15686-1:2011 Buildings and constructed assets – Service life planning – Part 1: General principles and framework
- ISO 15686-8:2008 Buildings and constructed assets – Service life planning – Part 8: Reference service life and service-life estimation
- ISO 20915:2018 Life cycle inventory calculation methodology for steel products
- EN 15804:2012+A2:2019 Sustainability of construction works – Environmental product declarations – Core rules for the product category of construction products
- ISO 14067:2018 Greenhouse gases - Carbon footprint of products — Requirements and guidelines for quantification
- EN 15942:2012 Sustainability of construction works – Environmental product declarations – Communication format business-to-business
- KOBIZE Emissions (CO<sub>2</sub>. SO<sub>2</sub>. NO<sub>x</sub>. CO and total dust) from electricity, 2024

LCA,LCI, input data verification  
Michał Piasecki, PhD. D.Sc.

Qualified electronic signature

Head of Thermal Physic, Acoustic and Environment Department  
Agnieszka Winkler-Skalna, PhD.

Qualified electronic signature



**Instytut Techniki Budowlanej**

00-611 Warsaw, Filtrowa 1

**Thermal Physics, Acoustics and Environment Department**

02-656 Warsaw, Ksawerów 21

# **CERTIFICATE No 915/2026 of TYPE III ENVIRONMENTAL DECLARATION**

Products:

**Structural trapezoidal metal sheet BTR,  
Structural trapezoidal metal sheet BTR with anti- condensation membranes;  
Cold-formed steel profil <C,Σ,Z>**

Manufacturer:

**Balex Metal Sp. z o. o.**

Wejherowska 12C, 84-239 Bolszewo, Poland

confirms the correctness of the data included in the development of  
Type III Environmental Declaration and accordance with the requirements of the standard

**EN 15804+A2**

**Sustainability of construction works.  
Environmental product declarations.  
Core rules for the product category of construction products.**

This certificate, issued on 13<sup>th</sup> March 2026 is valid for 5 years  
or until amendment of mentioned Environmental Declaration

Head of the Thermal Physic, Acoustics  
and Environment Department

Agnieszka Winkler-Skalna, PhD



Deputy Director  
for Research and Innovation

Krzysztof Kuczyński, PhD

Warsaw, March 2026